

**Anti-MASPIN Picoband Antibody**  
**Catalog # ABO12047****Specification**

---

**Anti-MASPIN Picoband Antibody - Product Information**

Application	WB, IHC-P, ICC
Primary Accession	<a href="#">P36952</a>
Host	Rabbit
Reactivity	Human, Mouse, Rat
Clonality	Polyclonal
Format	Lyophilized

**Description**

Rabbit IgG polyclonal antibody for Serpin B5(SERPINB5) detection. Tested with WB, IHC-P, ICC in Human;Mouse;Rat.

**Reconstitution**

Add 0.2ml of distilled water will yield a concentration of 500ug/ml.

**Anti-MASPIN Picoband Antibody - Additional Information**

**Gene ID** 5268

**Other Names**

Serpin B5, Maspin, Peptidase inhibitor 5, PI-5, SERPINB5, PI5

**Calculated MW**

42100 MW KDa

**Application Details**

Immunocytochemistry , 0.5-1 µg/ml, Human, -<br>Immunohistochemistry(Paraffin-embedded Section), 0.5-1 µg/ml, Human, Mouse, Rat, By Heat<br>Western blot, 0.1-0.5 µg/ml, Human, Mouse, Rat<br>

**Subcellular Localization**

Secreted, extracellular space.

**Tissue Specificity**

Normal mammary epithelial cells.

**Protein Name**

Serpin B5

**Contents**

Each vial contains 5mg BSA, 0.9mg NaCl, 0.2mg Na<sub>2</sub>HPO<sub>4</sub>, 0.05mg Na<sub>3</sub>.

**Immunogen**

E.coli-derived human MASPIN recombinant protein (Position: M1-A350). Human MASPIN shares 88% and 89% amino acid (aa) sequence identity with mouse and rat MASPIN, respectively.

**Purification**

Immunogen affinity purified.

**Cross Reactivity**

No cross reactivity with other proteins.

**Storage**

**At -20°C for one year. After reconstitution, at 4°C for one month. It can also be aliquotted and stored frozen at -20°C for a longer time. Avoid repeated freezing and thawing.**

**Sequence Similarities**

Belongs to the serpin family. Ov-serpin subfamily.

**Anti-MASPIN Picoband Antibody - Protein Information**

**Name** SERPINB5

**Synonyms** PI5

**Function**

Tumor suppressor. It blocks the growth, invasion, and metastatic properties of mammary tumors. As it does not undergo the S (stressed) to R (relaxed) conformational transition characteristic of active serpins, it exhibits no serine protease inhibitory activity.

**Cellular Location**

Secreted, extracellular space.

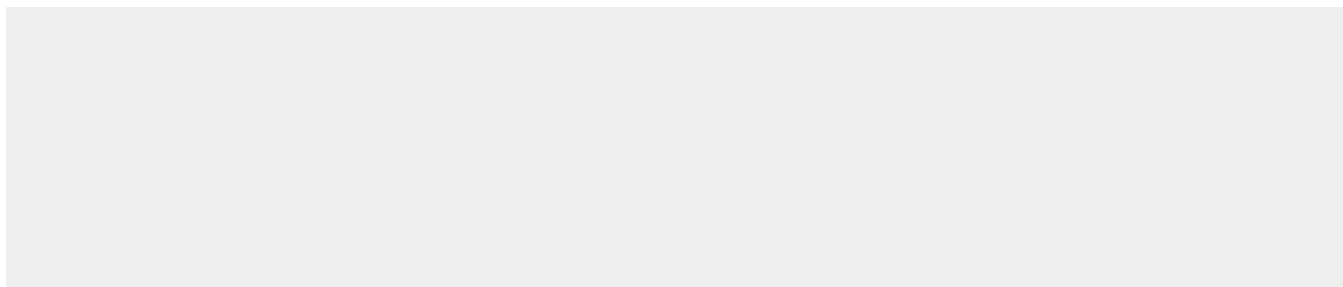
**Tissue Location**

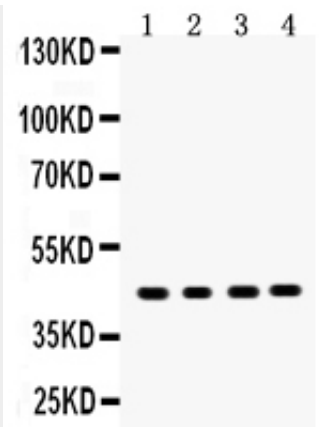
Normal mammary epithelial cells.

**Anti-MASPIN Picoband Antibody - Protocols**

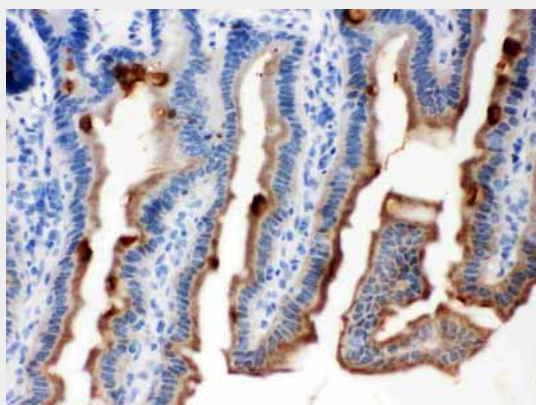
Provided below are standard protocols that you may find useful for product applications.

- [Western Blot](#)
- [Blocking Peptides](#)
- [Dot Blot](#)
- [Immunohistochemistry](#)
- [Immunofluorescence](#)
- [Immunoprecipitation](#)
- [Flow Cytometry](#)
- [Cell Culture](#)

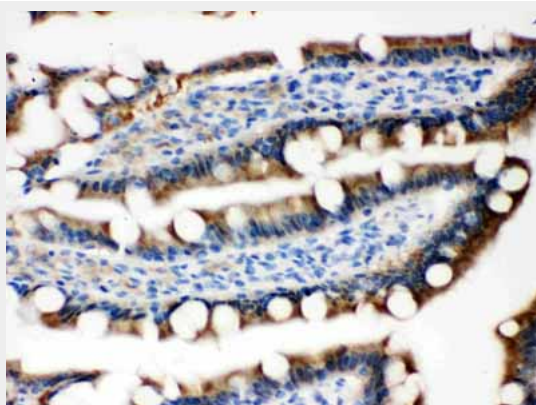
**Anti-MASPIN Picoband Antibody - Images**



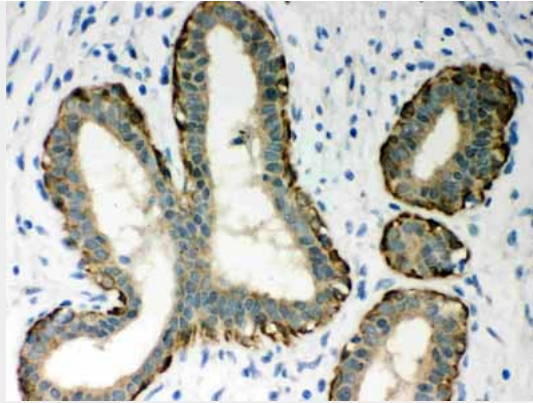
Anti- MASPIN Picoband antibody, ABO12047, Western blotting  
All lanes: Anti MASPIN (ABO12047) at 0.5ug/ml  
Lane 1: Mouse Intestine Tissue Lysate at 50ug  
Lane 2: Human Placenta Tissue Lysate at 50ug  
Lane 3: MCF-7 Whole Cell Lysate at 40ug  
Lane 4: MM231 Whole Cell Lysate at 40ug  
Predicted bind size: 42KDa  
Observed bind size: 42KDa



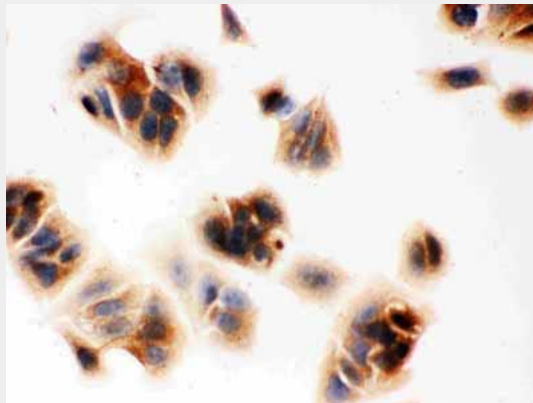
Anti- MASPIN Picoband antibody, ABO12047, IHC(P)  
IHC(P): Mouse Intestine Tissue



Anti- MASPIN Picoband antibody, ABO12047, IHC(P)  
IHC(P): Rat Intestine Tissue



Anti- MASPIN Picoband antibody, ABO12047, IHC(P)IHC(P): Human Mammary Cancer Tissue



Anti- MASPIN Picoband antibody, ABO12047, ICCICC: MCF-7 Cell

#### **Anti-MASPIN Picoband Antibody - Background**

SERPINB5 is also known as PI5 or maspin. Maspin (mammary serine protease inhibitor) is a protein that in humans is encoded by the SERPINB5 gene. Maspin is expressed in the skin, prostate, testis, intestine, tongue, lung, and the thymus. Maspin is a member of the serpin superfamily of serine protease inhibitors.[1] The primary function of most members of this family is to regulate the breakdown of proteins by inhibiting the catalytic activity of proteinases. Through this mechanism of action, serpins regulate a number of cellular processes including phagocytosis, coagulation, and fibrinolysis.